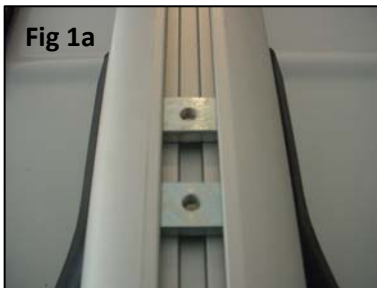


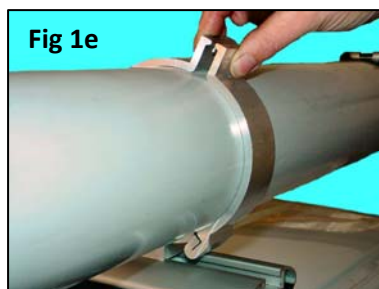


Bazooka Clamp Installation Instructions

- (1) Insert the 2 M8 x 20 x 34 channel nuts into the top recess of the crossbar (Fig 1a).
- (2) Place the K bracket onto the top recess of the crossbar inline with the channel nuts (Fig 1b).
- (3) Lightly tighten the K bracket with the M8 x 22 attachment bolts/ SS M8 spring washer so that the channel nuts are fully located across the crossbar (Fig 1c).



- (4) Position the K Bracket to suit the conduit pipe being used, tighten bolts.
- (5) Place the conduit pipe on the K bracket, with the upper C bracket resting on the pipe (Fig 1d).
- (6) Slide the lower C bracket onto the K bracket, holding the lower C bracket against the pipe (Fig 1e).
- (7) Insert the M8 x 30 bolt; assemble the M8 flat washer and Nyloc nut (Fig 1f).



- (8) Do not fully tighten until the conduit is positioned in place.
- (9) Repeat this process for the other end of the conduit.
- (10) Tighten both M8 x 30 bolts and check that the conduit pipe is secured.