



Toyota Hiace Gripper Rear Step

1. Locate mounting holes underneath vehicle (**Fig 1**).
2. The step outriggers come in pairs (left & right). When mounting ensure they are positioned correctly underneath vehicle. The holes on the outriggers must line up with mounting holes on vehicle (**Fig 2**).
3. The outriggers are secured to vehicle using existing M12 bolt #1 (used to secure black cross member) and 2 x M12 x 40 ZP HT 8.8 bolts, spring & flat washers into holes #2 and #3 (**Fig 3**). To commence installation remove bolt #1.

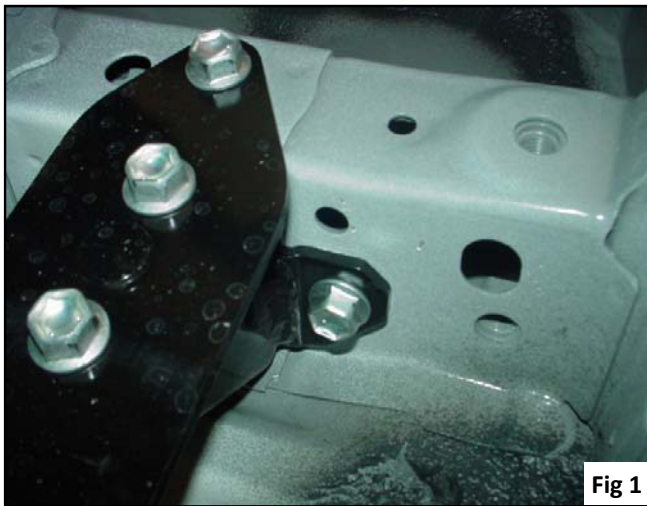


Fig 1

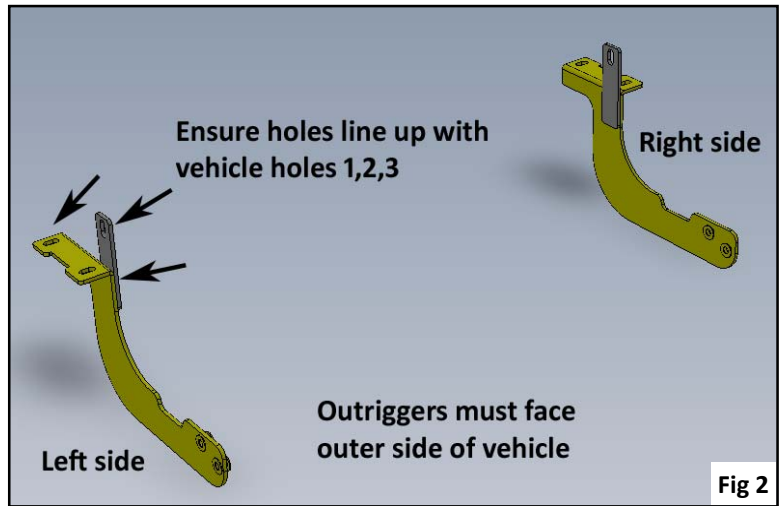


Fig 2

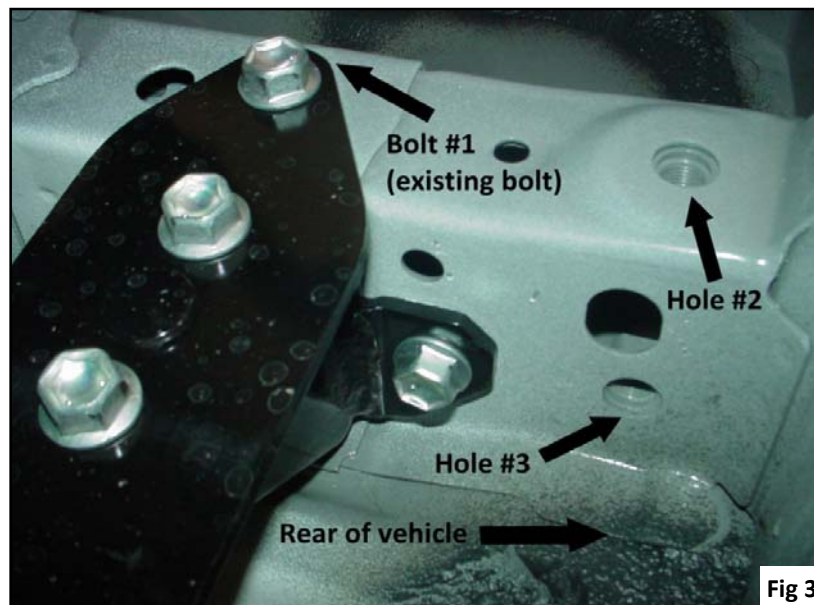


Fig 3

Contact details for KRS Racks

Tel: +61 8 8363 5770, Email: enquiry@krsracks.com, Web: www.thekineticsgroup.net

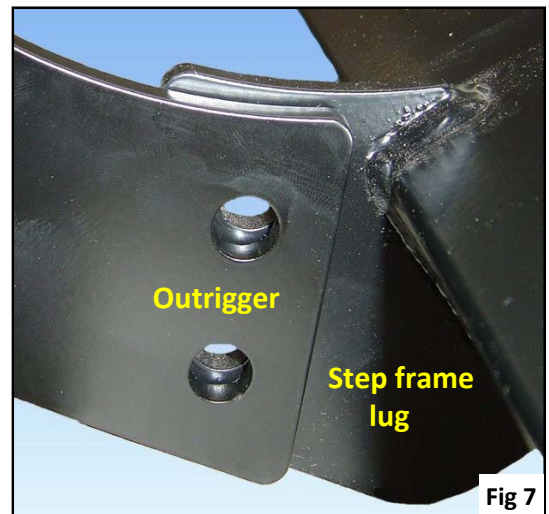
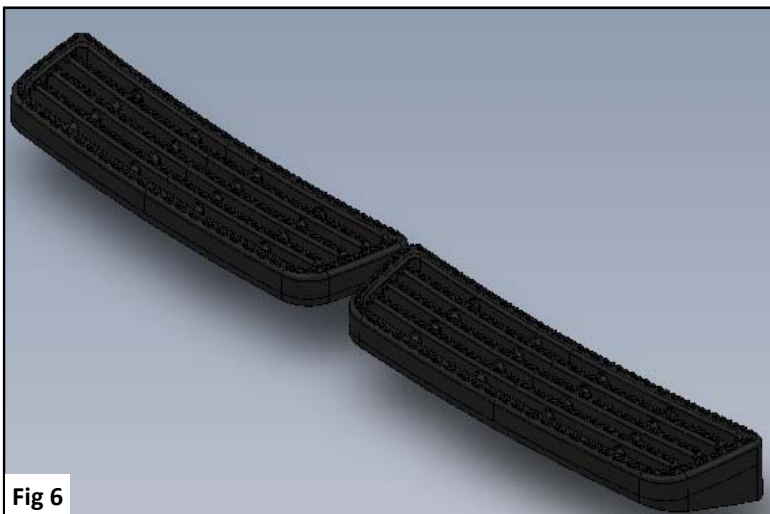
Gripper

Toyota Hiace Gripper Rear Step

4. Locate vehicle holes #1, #2 & #3 and position outrigger in place. Place bolt # 1 in hole and lightly tighten. Place M12 x 40 ZP HT 8.8 bolt, spring & flat washer in hole #2 and lightly tighten (**Fig 4**). Place M12 x 40 ZP HT 8.8 bolt, spring & flat washer in hole #3 and lightly tighten (**Fig 5**). Once all bolts are located, tighten securely.
5. Repeat step 4 & 5 for other outrigger.



6. With the assistance of another person, position step frame (**Fig 6**) onto outriggers. Ensure holes on step frame lugs line up with the holes on outriggers. The outrigger must be positioned to the outside of the step frame lug (**Fig 7**).



Gripper

Toyota Hiace Gripper Rear Step

7. Place 1 x M12 x 30 black ZP HT 8.8 bolt and black washer through first hole and then place another black washer over bolt (**Fig 8**). Repeat step for the other three (3) bolts/holes. Once the step frame is correctly positioned, place M12 nyloc nuts on bolts and securely tighten (**Fig 9**).
8. The step should look as per **Fig 10**.

