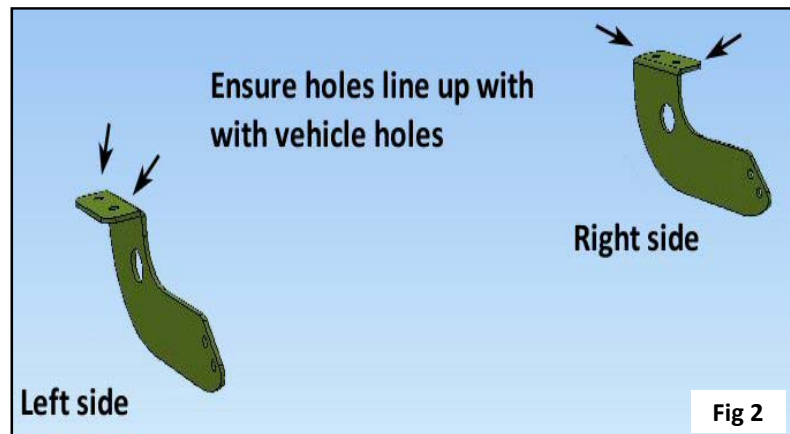
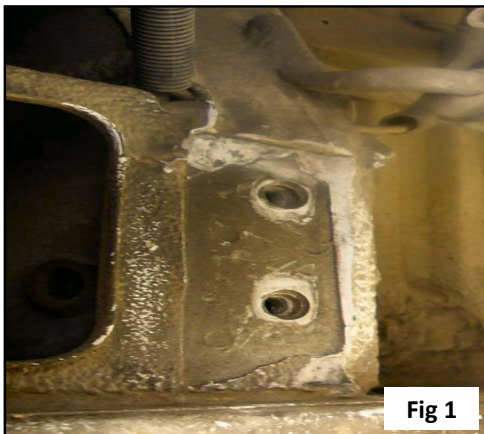


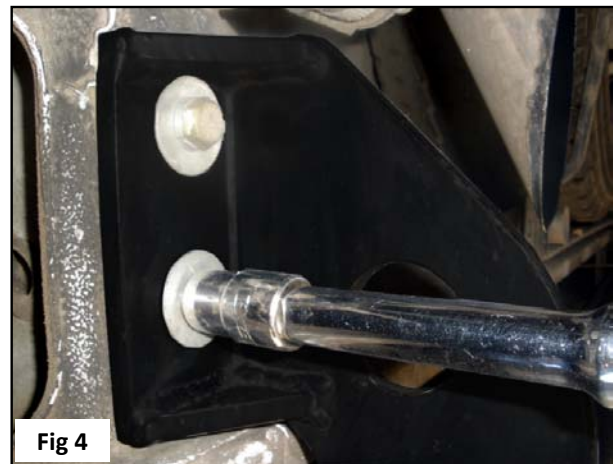
Gripper

Renault Traffic Gripper Rear Step

1. Locate mounting holes underneath vehicle (**Fig 1**).
2. The step outriggers come in pairs (left & right). When mounting ensure they are positioned correctly underneath vehicle. The holes on the outriggers must line up with mounting holes on vehicle (**Fig 2**).
3. The outriggers are secured to vehicle using 2 x 3/8 x 1.5" ZP HT bolts, spring & flat washers into vehicle mounting holes.



4. Locate vehicle holes and position outrigger in place (**Fig 3**). Any sealant found around where the outrigger is to be positioned, must be removed. Place 3/8 x 1.5 in ZP HT Grade 5 bolt, spring & flat washer in hole and lightly tighten. Repeat for other hole. Once all bolts are located, tighten securely (**Fig 4**). Repeat step for other outrigger.



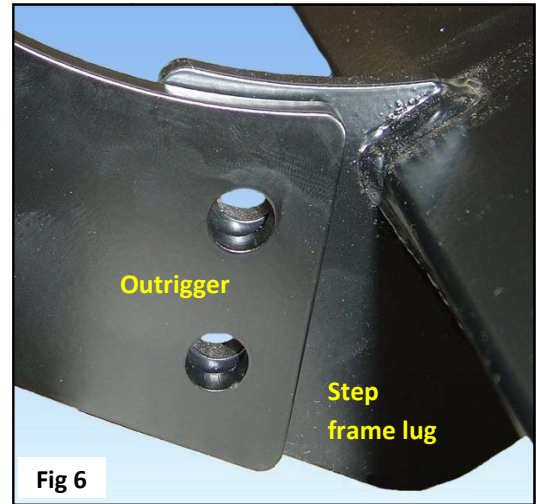
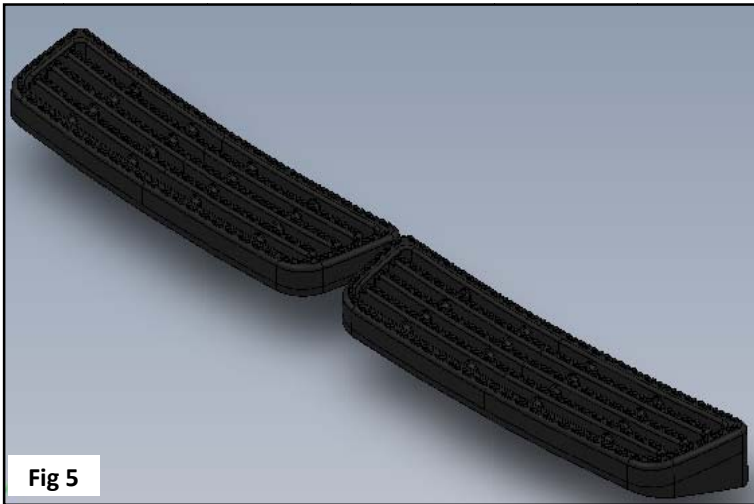
Contact details for KRS Racks

Tel: +61 8 8363 5770, Email: enquiry@krsracks.com, Web: www.thekineticsgroup.net

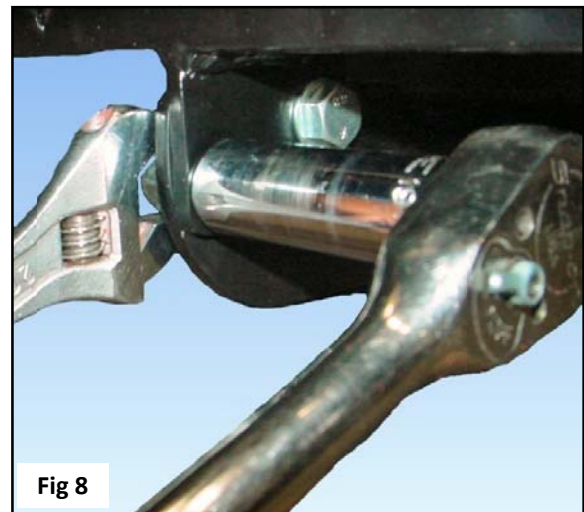
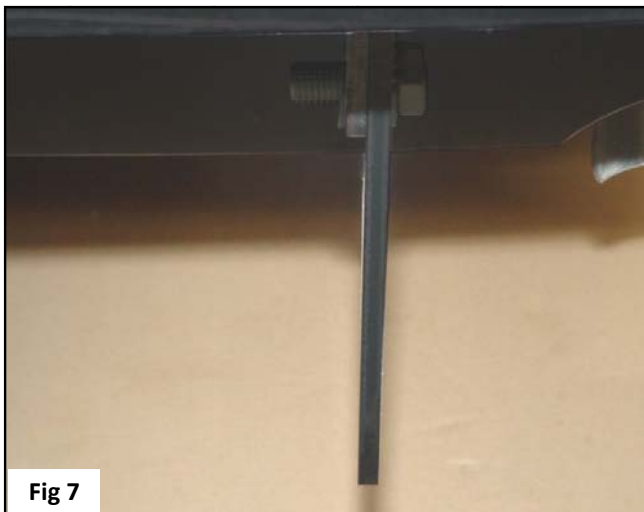
Gripper

Renault Traffic Gripper Rear Step

5. With the assistance of another person, position step frame (**Fig 5**) onto outriggers. Ensure holes on step frame lugs line up with the holes on outriggers. The outrigger must be positioned to the outside of the step frame lug (**Fig 6**).



6. Place 1 x M12 x 30 black ZP HT 8.8 bolt and black washer through first hole and then place another black washer over bolt (**Fig 7**). Repeat step for the other three (3) bolts/holes. Once the step frame is correctly positioned, place M12 nyloc nuts on bolts and securely tighten (**Fig 8**).





Renault Trafic Gripper Rear Step

7. The step should look as per Fig 9.



Fig 7